

Historic, Archive Document

Do not assume content reflects current scientific knowledge, policies, or practices.

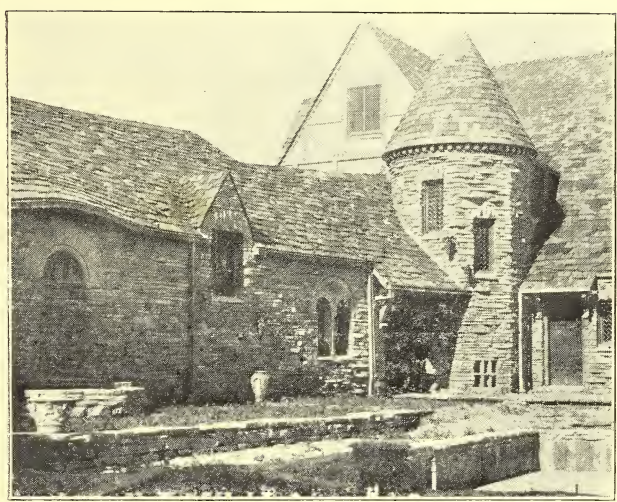
72,23
LIBRARY
RECEIVED
SEP 5 1929
★

PEONIES

and IRISES

BEING A LIST OF THE
BETTER VARIETIES
(Rare and Standard)

FOR THE
SEASON 1929



AS OFFERED BY

Clarence W. Hubbard
GROWER OF
PEONIES & IRISES
1275 NORTH WAUKEGAN ROAD
LAKE FOREST · ILLINOIS

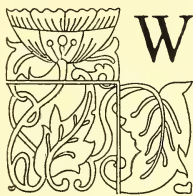
Shekinah	3 for	1.00
Souv. de Mme Gaudichau	3 for	2.00
Sunset	3 for	2.00
Sweet Lavender	3 for	1.75
Sherwin Wright	6 for	1.00
Turco	3 for	1.00
Violecea Grandiflora	6 for	1.00
W. J. Fryer	6 for	1.50
Yvonne Peletier	6 for	1.50
Zephyr	6 for	1.00

BEARDLESS

The beardless sorts are, like the single and Japanese Peonies, less well known than they deserve. They are free flowering, very decorative in the garden and valuable for cutting. They are not troubled by iris rot but do well in a moist location which would be destruction to bearded sorts. A moist location is not necessary as they do well in a dry location. However, the roots must not be permitted to dry out before they are established. Plant the roots four inches deep and water well, keeping them moist for a few days until rooted and you will have no difficulty.

Mrs. A. W. Tait	3 for	\$1.25
Alba	3 for	1.25
Butterfly	3 for	1.25
Celestial	3 for	1.25
Dorothy K. Williamson	3 for	1.50
Duchess of York	3 for	1.25
Emperor	3 for	1.50
Lord Wolseley	3 for	1.50
Lord Balfour	3 for	1.50
Lady Northcliffe	3 for	.125
Mrs. Gray Hill	3 for	1.25
Mrs. Perry	3 for	1.00
Mrs. Rowe	3 for	1.50
Mrs. Saunders	3 for	1.00
Nora Distin	3 for	1.50
Notha	3 for	1.25
Nurse Cavel	3 for	1.25
Ochroleuca Gigantea	3 for	1.50
Perry's Blue	3 for	1.50
Pseudo acorus	6 for	1.00
Snow Queen	6 for	1.00
Superba	6 for	1.00
Shelford Giant	3 for	2.00
Thelma Perry	3 for	1.50
Papalion	3 for	1.50

BY WAY OF EXPLANATION



WE offer for the season of 1929, the following list of Peonies. The Peony enthusiast will appreciate not only the length of the list of varieties but the discrimination in its selection. The landscape architect and modest home owner will find his needs in popular priced, standard varieties in good selection covering the full range of color and blooming season.

In continuation, of the custom of the Peterson Nursery (of whose stock we had first selection when they discontinued business in 1924), we show in heavy type what they termed **Master** varieties. The idea being to indicate a selection of Peonies which were outstanding and distinctive, regardless of price. Such a collection would cover the full range of form, color, season of blooming and general dependable qualities.

As a further assistance as to desirability in general, we give the rating of the various varieties as based on a symposium of the American Peony Society; 10 being perfection. Varieties not rated are new introductions. We also give the general color effect and time of blooming, viz. — Early, Midseason and Late.

TERMS

Our business is decidedly seasonable. We do a minimum of bookkeeping which effects a savings in costs and enables us to give more attention to shipping service, etc. For these reasons our terms are strictly—

CASH WITH ORDER

Due to the fact that we make no charges for packing and delivery to transportation company, we cannot accept orders under \$2.00.

Peonies priced at one dollar each will be sold at \$10.00 per dozen as a collection, buyers selection. Reduction applies **only** to varieties priced at one dollar each and in lots of not less than twelve.



View in Our Exhibition Hall

We ho'd a Flower Show each year at "Pecny and Iris Time." Yourself and flower-loving friends are invited to see the finest planting of peonies in the state, if not in the world.

We guarantee our stock to be in all respects first quality, true to name, etc. Prices are based on standard size roots of 3 to 5 eyes with a properly balanced root system, packed and delivered to transportation company at Lake Forest, Illinois. In general, we ship by express but on small orders parcel post is less expensive. If you desire parcel post insured shipment, please add to your remittance 20 cents if for one or two roots and 10 cents per root if for three or more roots.

PEONIES

Double Varieties

8.8	Addielanchea, late, Mids. white	\$ 6.00
8.8	Alsace Lorraine, Late white	1.75
8.1	Arlequin, Mids. pink	1.25
7.8	Augustin d'Hour, Early red	1.00
8.7	Auguste Dessert, Mids. rose pink	6.00
8.7	Avalanche, Late Mids. white	1.00
8.6	A. P. Saunders, Late white	8.00
9.0	Baroness Schroeder, Late white	1.00
8.9	Betty Blossom, late mids. white	20.00
	Blanche King, Deep pink	50.00
8.4	Candeur, Mids. silver pink	2.00
8.4	Charlot, Silver lilac	6.00
8.6	Cherry Hill, Early red	3.75
8.4	Chestine Gowdy, Mids. shell pink	1.00
8.5	Clemenceau, late dark pink	4.00
8.7	Claire Dubois, Late dark pink	1.00
8.1	Couronne d'Or, Late milk white	1.00
8.4	David Harum, Red	5.00
8.5	Desire, Light pink	5.00
9.1	Doris, Pink	7.00
	Directeur Ursat, Flesh pink	10.00
	Denis Debatene, silver pink	15.00
8.1	Duchesse de Nemours, Early white	1.00
8.1	Dr. H. Barnsby, Late crimson	1.00
9.1	Edwin C. Shaw, Mids. pink	17.00
8.5	Elisa, Hydrangea pink	8.00
9.2	Elizabeth B. Browning, Late white	2.75
8.7	Elwood Pleas, Mids. light pink	1.75
9.0	Ella Christiansen, Pink	50.00
8.9	Enchantresse, Late white	3.00
8.6	Eugenie Verdier, Early mids. light pink	1.00
8.5	Exquisite, late Mids. pink	2.75
7.8	Faribault, Late Mids. dark pink	1.50
8.4	Felix Crousse, Mids. red	1.00
9.3	Festiva Maxima, early white	1.00
7.8	Florence Nightingale, very late white	1.00
9.2	Florence Macbeth, Mids. light pink	10.00
9.1	Frances Willard, Late mids. white	1.75
8.6	Frances Shaylor, Mids. white	3.50
9.3	Frankie Curtis, Mids. white	20.00
8.9	Georgiana Shaylor, Mids. shell pink	2.75
8.5	Germaine Bigot, Mids. pink	1.00
8.6	Ginette, Mids. flesh pink	1.00
9.2	Grace Loomis, Late white	15.00
8.8	Grace Ott, Mids. red	8.00
8.8	Grandiflora, very late light pink	1.00
8.6	Golden Dawn, Cream yellow	4.00
8.8	Henry Avery, late cream pink	3.50
9.0	Hazel Kinney, late light pink	50.00
7.9	Helen Wolaver, late pink	1.00
9.1	Hansiana Brand, Deep pink	50.00
	Henri Core, Flesh pink	12.50
7.7	H. F. Reddick, Red	1.00
8.5	Inspecteur Lavergne, Mids. red	15.00
8.9	James Boyd, Late flesh white	7.00
8.7	James R. Mann, Mids. pink	10.00
8.7	James Kelway, Early mids. white	1.25
8.3	Jeanne Gaudichau, Late white	1.00
9.2	Jeannot, Very late lav. salmon pink	4.50
9.3	John M. Good, Mids. white	25.00
8.9	Jubilee, Mids. flesh white	2.00
9.0	June Day, Mids. shell pink	8.00
8.6	Judge Berry, Early light pink	3.50
8.6	Jessie Shaylor, Mids. cream	5.00
8.8	Karl Rosefield, Mids. red	1.00
9.0	Katherine Havemeyer, Late Mids. pink	15.00
9.8	Kelway's Glorious, Mids. white	9.00
8.8	Kelway's Queen, Mids. light pink	8.00
9.1	Lady Alexandra Duff, Early white	2.00
9.2	La Fee, Early dark pink	8.00
9.0	La France, Late deep pink	3.00
8.4	La Martine, Mids. pink	4.00
8.5	La Perle, Late pale pink	1.00
8.8	La Tendresse, Mids. milk white	1.00
8.8	Laura Dessert, Mids. canary yellow	5.00
9.9	Le Cygne, Mids. white	8.00
8.8	Lillian Gumm, Mids. light pink	5.00
9.0	Longfellow, Mids. cherry red	3.25
8.2	Libellule, Mids. flesh	3.00
8.7	Lorch, Mids. cream white	3.50
8.9	Laverne Christman, Deep pink	50.00
8.3	La Rosiere, Mids. white	1.00
8.1	Livingstone, Late pink	1.00
8.8	Loveliness, Late pink	2.00
8.4	Luetta Pfeiffer, Early light pink	5.00
8.6	Marchioness of Lansdowne, Late pink	2.75
9.0	Milton Hill, Late flesh	4.00
8.3	Marie Jacquin, Mids. white	1.50
9.0	Mabel L. Franklin, Mids. light pink	5.00
8.7	Madelon, Late mids. pink	8.00
8.1	Marguerite Gaudichau, Late shell pink	1.00
8.9	Marie Crousse, Late Mids. shell pink	1.00
8.5	Marie Lemoine, Late white	1.00
9.1	Martha Bulloch, Late pink	6.00
8.7	Mary Brand, Mids. red	1.75
8.7	Mary P. King, Pink	3.00

8.2	Marcelle Dessert, Mids. cream white	1.00
	Miriam, Mids. pink	2.00
9.0	Mary Woodbury Shaylor, m. pale pink	3.75
8.5	Maud L. Richardson, Late pink	1.75
8.2	Midsummer Night's Dream, lv. white	1.25
7.8	Miss Salway, Mids. white	2.50
8.0	Mlle. Jeanne Riviere, Mids. rose pink	1.00
8.6	Mme. Auguste Dessert, Mids. rose pink	1.75
7.8	Mme. de Verneville, Early white	1.00
8.6	Mme. Edouard Doriat, Mids. white	8.00
8.2	Mme. Gaudichau, Mids. dark red	2.75
9.4	Mme. Jules Dessert, Mids. cream white	2.50
8.5	Mme. Manchet, Very late sil. lilac	1.00
8.9	Mme. Emile Lemoine, late milk white	1.00
9.0	Mrs. Frank Beach, late cream white	50.00
9.1	Mrs. Harriet Gentry, Late white	50.00
8.3	M. Dupont, Late white	1.00
9.2	M. Jules Elie, Early deep pink	1.00
8.8	M. Martin Cahuzac, Early dark red	2.00
8.4	Mont Blanc, Mids. milk white	1.25
9.2	Mrs. C. S. Minot, late pink and white	20.00
9.3	Mrs. Edward Harding, Late Mids. white	7.50
7.9	Mrs. Jennie R. Gowdy, Flesh white	1.50
9.0	Mrs. John M. Kleitsch, Late lav. pink	50.00
9.1	Mrs. Romaine B. Ware, Pink	50.00
8.3	Mrs. George Bunyard, Late mids. sh. p.	2.75
	Mr. L. von Leeuwen, Mids. red	5.00
	Nanon, Flesh pink	6.00
9.1	Nancy Dolman, Mids. pink	15.00
	Nanette, Cream white	6.00
8.8	Nymphaea, Mids. white	2.75
8.5	Octavie Demay, Early shell pink	1.00
8.5	Opal, Shell pink	1.25
8.6	Offinicalis Rubra Plena, Very early red	1.00
8.3	Perrete, White	2.00
9.0	Phyllis Kelway, Mids. pink	5.00
9.2	Philippe Rivoire, Late red	7.50
8.8	Phoebe Carey, Late light pink	3.75
8.2	Pierre Duchartre, Late pink	1.00
8.7	President Taft, see Reine Hortense	1.25
9.3	President Wilson, Late pink	17.50
8.4	Renee Marie, Mids. flesh pink	2.50
8.9	Pride of Essex, Mids. white	3.75
8.6	Primevere, Mids. cream yellow	2.00
9.0	Raoul Dessert, Late pink	6.00
8.3	Rachel (Lemoine) Mids. soft pink	2.75
8.7	Reine Hortense, Mids. light pink	1.25
8.8	Richard Carvel, Early red	3.50
8.6	Rita, Light pink	6.00
9.0	Rosa Bonheur, Late mids. flesh pink	2.75
9.1	Rose Shaylor, Mids. white	10.00
8.8	Rosette, Early Mids. Silvery pink	3.00
7.9	Ruth Brand, Mids. lavender pink	1.00
9.0	Sarah Bernhardt, Late pink	1.50
8.5	Sarah Carstensen, Mids. Hy. pink	3.50
9.1	Sarah K. Thurlow, Late white	12.50
8.6	Secretary Fewkes, Mids. white	4.50
8.7	Silvia Saunders, Mids. light pink	10.00
9.7	Solange, Late white	2.50
9.1	Souv. de Louis Bigot, Late light pink	3.75
8.5	Standard Bearer, Early light pink	3.00
8.2	Suzette, Mids. pink	2.00
9.8	Therese, Early light pink	2.50
9.1	Thomas C. Thurlow, Mids. white	12.50
9.4	Tourangelle, Very late flesh pink	2.00
7.8	Trio. de Exp. de Lille, Mids. pink	1.00
8.3	Venus, Mids. shell pink	1.00
8.9	Victory Chateau Thierry, Early pink	50.00
8.2	Victoire de la Marne, Mids. red	1.75
9.3	Walter Faxon, Mids. Salmon pink	4.00
8.8	W. F. Christman, Mids. flesh white	4.00
8.4	William F. Turner, Mids. red	2.00

WHOLESALE

We are in position to supply and quote attractive prices covering acreage plantings of the better commercial or cut flower peonies. We have also supplied many display or exhibition plantings to dealers. These usually consist of two or three roots of a number of varieties (50 to 200). From these display plants, they book orders at blooming time. A planting of this nature makes a beautiful garden, the best possible salesman and soon becomes the "talk of the town," at least horticulturally.

If you are a grower of cut flowers for market or roadside sales or a dealer or jobber in roots, it is to our mutual advantages to have us quote your requirements.

SINGLE AND JAPANESE

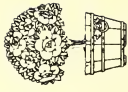
8.4	Albiflora, The Bride, Early W. S.	1.50
8.5	Alma, Cream pink Jap.	1.25
9.2	Ama No Sode, Mids. light pink Jap.	7.50
8.6	Avant Garde, Early light pink S.	4.00
8.9	Aureolin, Pink Jap	2.00
7.7	Apple Blossom, flesh pink, Jap.	2.00
	Aureole, Pink Jap	1.75
8.2	Attraction, Tyrian rose, Jap.	1.00
	Akashi-gata, bright rose, Jap.	3.00
	Balliot, Red S.	4.00
8.1	Cathedral, Pink, Jap.	1.50
	Celestial, Pink S.	1.00
8.1	Clairette, White, S.	2.00
	Corrinne, Shell pink, Single	4.00
	Dawn, Pink, Jap.	1.00
7.9	Dog Rose, Pink Jap	1.50
	Defiance, Rose red, Single	1.00
6.3	Dr. Edgar Pleas, Pink, Jap.	1.00
	Duchess of Bedford, very late p., S.	4.50
	Exquisite First, Late white, Jap.	3.50
	Edward VII, Mids. red, Jap.	1.00
8.1	Eglantine, light pink S.	2.00
	Etienne Dessert, China pink S.	2.50
9.2	Fuyajo, Mids. dark red Jap.	5.00
	Glory, Tyrian rose Jap.	1.00
8.2	Goldmine, Late dark pink, Jap.	2.00
8.0	Gypsy, Red Jap	1.00
	Instituteur Doriat, Late red Jap.	17.50
	Jeanne Lapandry, white Jap	10.00
8.7	Harriet Olney, Pink single	2.25
9.0	Henry Potin, China Pink, Jap.	5.00
	Helen, Early light pink, single	15.00
	Imperial Queen, Jap.	1.00
9.3	Isani Gidui, Mids. white Jap.	7.50
	Jeanne Lapandry, white, Jap.	4.00
8.5	Kameno Kegoromo Viol, crimson, Jap.	2.00
9.5	Kukeni Jishi, Late light pink Jap.	10.00
	Kumagoe, Crimson Pink Jap.	1.00
8.2	Kino Kimo, Crimson carmine Jap.	2.00
	Kossi, Pink Jap.	1.50
7.7	La Nuit, Red single	1.00
8.6	Le Jour, Early white S.	4.00
	Lothario, Pink Jap.	1.00
8.4	L'Etincelante, Carmine S.	2.50
7.7	Lucienne, White S.	1.00
	Magnificence, Rose Jap.	1.00
8.5	Madeleine Gauthier, Mids. Pink S.	1.75
8.2	Mafeking, Red Single	1.75
8.5	Marguerite Dessert, Mids. white, S.	2.75
8.7	Margaret Atwood, White, Jap.	5.00
	Melody, Pink anemone, Jap.	4.00
	Mischief, Late pink, S.	4.00
	Miss Morris, Pink S.	1.00
	Mellin Knight, Dark red, S.	1.50
8.6	Mikado, Mids. red, Jap.	2.00
	Nabunishiki, Splashed carmine Jap.	1.00
7.6	Neptune, Pink Jap.	1.00
	Nymphe, Pink S.	1.50
8.6	Nellie, Pink S.	2.00
	Nishi no shitone, white and pink Jap.	1.50
	Ohanagasa, Jap.	3.25
	Onahama, Late red, Jap.	10.00
7.2	Princess Mathilde, Light pink S.	1.00
	Perle Rose, Light pink S.	1.00
8.4	Perle Blanche, White S.	1.00
	Presto, Dark red S.	4.00
8.7	Princess Duleep Singh, Pink Jap.	3.00
8.9	Pride of Langport, Early light pink S.	4.75
	Queen of May, Blush white S.	1.00
	Rabelais, pink Jap	5.00
	Schwindt, Light pink S.	2.50
8.3	Snow Wheel, White Jap.	2.00
9.0	Some Ganoko, Red Jap.	4.00
8.2	Seiriu Somae, White Jap.	1.00
	Single red seedling, very tall	1.00
	Takaradama, Late white, Jap.	3.50
	Tatsu Gashira, Late red Jap.	3.50
9.4	Tamate-Boku, Mids. light pink, Jap.	20.00
8.9	Tokio, Mids. light pink, Jap.	4.00
9.0	Tora no Maki, Late white, Jap.	5.00
	Toreador, Red, Jap.	1.00
8.0	Torpilleur, purple carmine J.	2.50
	Venise, Pink, S.	1.00
8.8	Vera, Late red, S.	7.50
7.3	Veloutine, Tyrian purple, S.	1.25
8.5	White Swan, White, S.	1.00
7.7	Yeso, Mids. white, Jap.	1.00
	Yenchi no Tuski, Mids. white, Jap.	1.00

We do not do a general nursery business.

We are specialist growers of the Peony and Iris: an undivided allegiance.

FROM

Clarence W. Hubbard
GROWER OF
PEONIES & IRISES
1275 NORTH WAUKEGAN ROAD
LAKE FOREST · ILLINOIS



SEC. 435 1/2 P. L. & R.
U. S. POSTAGE
PAID
Lake Forest, Illinois
Permit No. 4

L. C. Corbett,
U. S. Dept. of Agriculture,
Bureau of Plant Industry,
Washington, D. C.

RETURN POSTAGE GUARANTEED